



**Changing the Community with Love**

# **GRACIOUS HANDS ORGANISATION PROFILE**



To create a vibrant community where everyone will feel a sense of existence and not left behind in equal rights, equal sustainable economic growth and equality health care and social support by 2030.

# INFO



**NAME**  
**GRACIOUS HANDS ORGANISATION**



**ADDRESS**  
Gracious Hands Organization, P.O Box 75, Ntcheu.



**PHYSICAL ADDRESS**  
Along M1 Road, Ntcheu Catholic Parish Offices.



**EMAIL ADDRESS**  
info@graciousho.org | donate@graciousho.org  
<https://graciousho.org>



**TARGET AREAS**  
Balaka, Ntcheu, Mwanza and Neno.



**TARGET GROUP**  
Elderly and Disabled Persons.



# ORGANISATIONAL BACKGROUND

Gracious Hands Organization is a Malawian Non-Governmental organization which has been established in order to ease pressure on government's efforts to accomplish the improved standards of life for people living in the Malawian communities. The organization seeks to provide care and support to the elderly, the youth as well as other vulnerable groups of people including the marginalized old people.

The organization also seeks to empower the youth socially and economically so that they should live a self-dependent life in the societies and contribute to the development of their societies. The organization also provides technical skills for the youth in different aspects.

Gracious Hands Organization also advocate for climate change and environmental conservation to address the challenges of Global Warming.

## VISION

**To create a vibrant community where everyone will feel a sense of existence and not left behind in equal rights, equal sustainable economic growth and equality health care and social support by 2030.**

# MISSION STATEMENT

As GRACIOUS HANDS ORGANISATION we are committed to achieve sustainable welfare of Elderly people, better health and economic empowerment for the Youth, enhance community capacity building initiatives and advocate sustainable environmental protection strategies.

OPTION

**“Offer your  
hand not  
your  
judgment”**

# STRATEGIC GOAL/OBJECTIVE

**GRACIOUS HANDS ORGANISATION  
strategic goal is to striving towards  
sustainable development, health  
and economic empowerment,  
manage and conserve the  
environment we thought that this  
will build lives and give Hope.**

# CORE VALUES



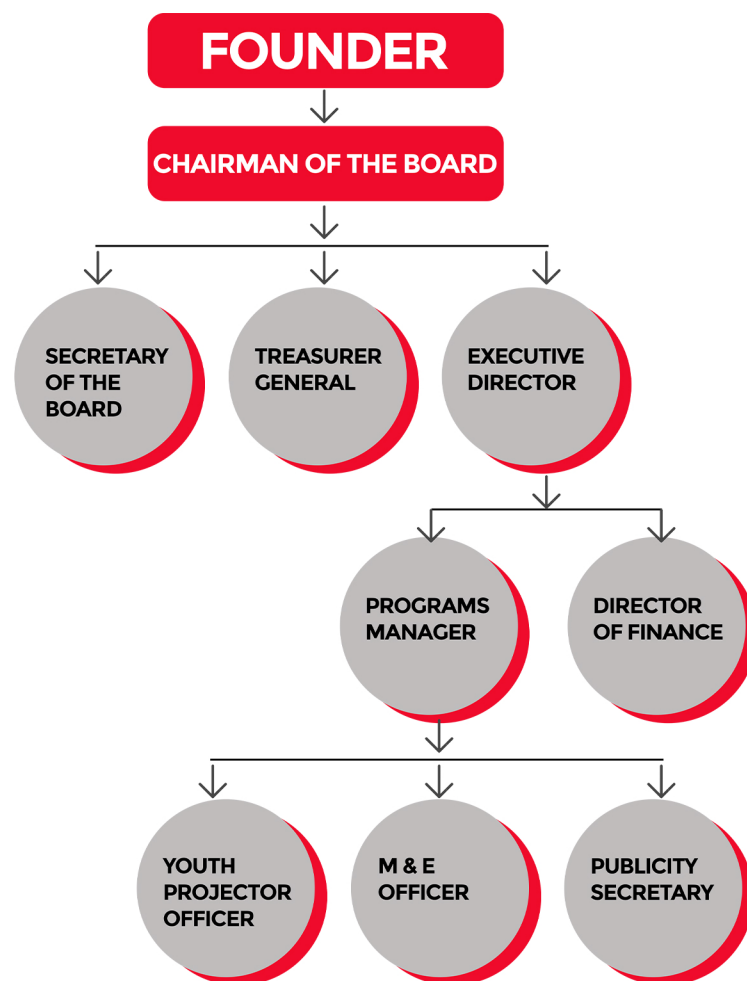
**THE REALIZATION OF GRACIOUS HANDS ORGANISATION VISION AND MISSION STATEMENT IS PRECIPITATED ON OUR CORE VALUES OF;**

- TRANSPARENCY AND ACCOUNTABILITY**
- MUTUAL RESPECT**
- TEAM WORK**
- PASSION**
- TOTAL COMMITMENT**
- EQUALITY AND JUSTICE**

## **STRATEGY TO INTERVENTION**

- INTERVENTION AND RESEARCH**
- PARTICIPATORY PLANNING AND IMPLEMENTATION**
- CAPACITY BUILDING THROUGH THE COORDINATION OF COMMUNITY BASED ORGANIZATIONS**
- NETWORKING WITH LIKE-MINDED ORGANIZATIONS**

# ORGANOGRAM



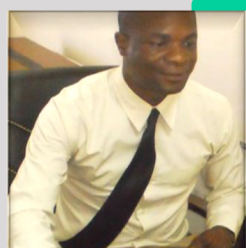
## FOUNDER COLLINGS NGAUYAYE

HE IS A HOLDER OF CERTIFICATE IN CHILD SAFETY AND PROTECTION FROM EMERGENCY FIRST RESPONSE COMPANY. HE IS TAILOR AND DESIGNER WORKING WITH WORLD CATAPILLER COMPANY WITH OVER 10 YEARS OF EXPERIENCE IN CHARITY WORKS AND EARLY CHILD DEVELOPMENT IN MALAWI.



## TREASURER GENERAL ADSON NTHENGA

HE HOLDS BACHELOR OF ARTS IN JOURNALISM (UNIMA), DIPLOMA IN PROFESSIONAL MARKETING (CIM) WITH EXPERIENCE IN PUBLIC RELATIONS AND ADVOCACY, PATIENT RELATIONS AND INFORMATION DIGITIZATION.



## CHAIRMAN OF THE BOARD IWELL GONTHI THAWI

HE IS A HOLDER OF BACHELOR OF ARTS IN JOURNALISM (UNIMA) WITH EXPERIENCE IN LECTURING/TEACHING, EDITOR, MANAGING EDITOR, RADIO PRESENTER AS WELL AS MANAGEMENT.



## EXECUTIVE DIRECTOR DAVID MAZIRO PHIRI

A HOLDER OF BACHELOR DEGREE IN SOCIAL SCIENCE (COMMUNITY DEVELOPMENT-UNIMA), TEACHING CERTIFICATE FROM LILONGWE TEACHERS TRAINING COLLEGE WITH EXPERIENCE IN VARIOUS MANAGERIAL POSITIONS AT AFRICAN RELIEF LOCK LIMITED AND CATHOLIC HEALTH COMMISSION.



## SECRETARY OF THE BOARD PARTSON NGAUYAYE

A HOLDER OF TEACHING CERTIFICATE FROM BLANTYRE TEACHERS TRAINING COLLEGE. A PROFESSIONAL TEACHER UNDER MALAWI GOVERNMENT AND EXPERIENCED CARE GIVER UNDER VISION TRUST INTERNATIONAL.

# KEY AREAS OF FOCUS

At GRACIOUS HANDS ORGANIZATION, our vision and mission is aligned with the MW2063 development agenda, which prioritizes wealth creation and self-reliance over poverty reduction. Our strategic goal for 2028 is to enhance the productivity and living standards of elderly, disabled persons, youth, and the children in Malawi for the sustainable development. Our key focus areas are:

- ▶ **Earl Childhood Development and Child protection,**
- ▶ **Elderly and Disability,**
- ▶ **Youth and economic empowerment,**
- ▶ **Climate change and environmental protection.**

# OUR ACHIEVEMENTS AND EXPERIENCE

**1**

**Establishment of early child development as Child day care Centre at Binoni Village in Balaka district.**

**2**

**Youths reached with youth friendly sexual health services at T/A Mpando, Ntcheu district.**

**3**

**Sorted items were distributed to the elderly and disabled persons at Katsekera village, T/A Mpando**

**4**

**Establishment of tailoring and designing school at Katsekera village, where 23 students enrolled and they have finished in September, 2024-a three months' course.**

**5**

**50 youths were reached with socioeconomic training at Katsekera village.**

**6**

**20 CBOs of 15 members each group were formed at T/A Mpando, Ntcheu district.**

# OUR APPROACHES

**A. People-centred and youth centric approaches.**

**B. Early childhood development approach**

**C. A holistic approach to community development**

# OUR CURENT PROGRAMMES

Currently the GAHO is working on Youth empowerment with at least 11 youths of which 3 have already been profited with the policy and they have been equipped with tools to start their economic activities such as barbering and opening up saloons at Phalula trading Centre in Balaka district.

We are also doing the following;

**Adolescent sexual and reproductive health:** We are dedicated to reduce teenage pregnancies and early marriages by focusing sexual and reproductive health, enabling the youths to stay in school.

**Helping elderly and disabled persons with social life resources:** We are enhancing elderly and disabled household livelihoods to empower them of their overall well-being.

**Early child development:** We are supporting a child day care Centre at Binoni Village in Balaka district with support in infrastructure, play materials and feeding program.

**Climate change and environment protection:** We are advancing environmental restoration efforts to foster a sustainable future.

**Capacity building and strengthening:** We are also enhancing capacity building and strengthening operations which increase our ability to deliver impactful within the community we serve.





**During the launch of elderly and disabled support at Katsekera Village, we distributed sorted items to the elderly and disabled persons.**



**Youth socioeconomic empowerment at Katsekera village. Out of 50 youths, we selected 23 students to learn tailoring and designing because of limited resources but having resources we can help a lot of youths at T/A Mpando.**



**Early child development: We established Kankhande Nursery school at Binoni Village-Balaka district**



**The management went to distribute porridge, sugar, soap, salt and playing materials at Kankhande Nursery school. Nutrition for the kids is very essential and if we can have a lot support from the international community we can reach out more kids in Balaka district.**



**CBOs establishment at Group Headman Sela, T/A Mpando-Ntcheu district.**



**One of the beneficiaries at Tailoring and Designing school at Katsekera, T/A Mpando.**



**Students learning theory for tailoring and designing at Katsekera village, T/A Mpando.**

**THANK  
YOU!!!**